

CERTIFIED LAND CORNER RECORDATION

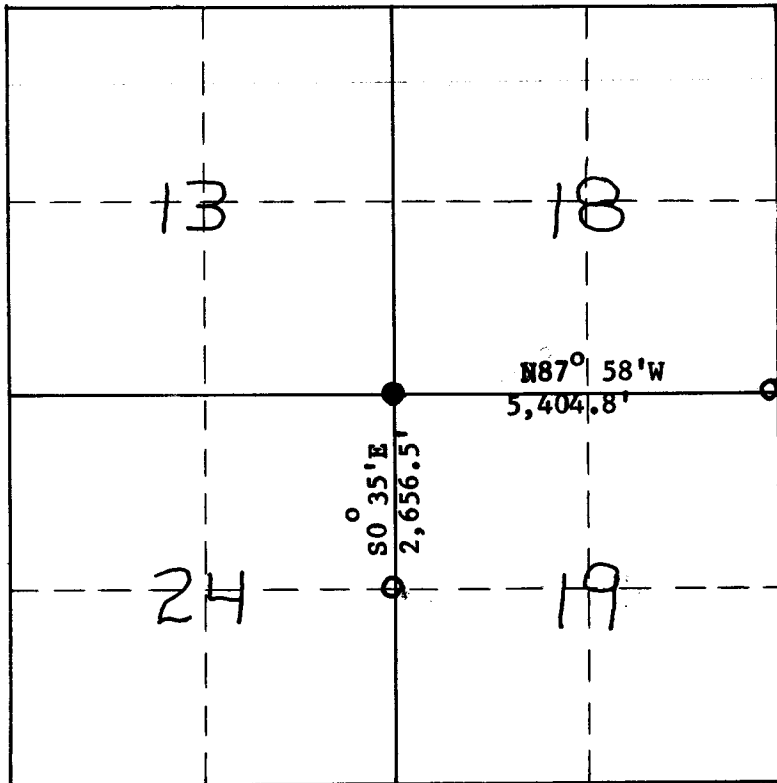
DESCRIPTION OF CORNER EVIDENCE FOUND, AND ORIGINAL RECORD (if known)

Found: at the N. W. Section Corner of Section 19, a loose granite stone 14"x10"x8" extending 3" above the ground; marked with 3 notches on the South side & 3 notches on the North Side.
 Survey of 1870 shows a granite boulder 14"x10"x8".

DESCRIPTION OF MONUMENT AND ACCESSORIES ESTABLISHED TO PERPETUATE THE ORIGINAL LOCATION OF THIS CORNER:

Reset: granite stone in place.

SKETCH, WITH COURSE AND DISTANCE TO ADJACENT CORNER IF DETERMINED IN THIS SURVEY.
 (May Sketch or Paste Reproduction on Reverse Side.)



Section 19 T 15N R 67W

● corner filed — this form

○ controlling corner

Details

I, William H. Smith certify that I have carefully performed or reviewed the work done on the diagrammed corner as reported on this recordation form and approve the same.

William H. Smith 470
 Signature of Surveyor Registration No.

STATE OF WYOMING,
 Office of Clerk and Recorder,
 County of Sarawie

This "corner record" was filed for record on the 24 day of March, 1975, was noted on the cross-index plat and is assigned page No. _____, in book No. filed

Janet C. Whitehead
 County Official

Cross Index No. <u>N 1</u>	T. <u>15</u>	R. <u>67</u>	Mer.
_____	T. _____	R. _____	Mer.
_____	T. _____	R. _____	Mer.
_____	T. _____	R. _____	Mer.
_____	T. _____	R. _____	Mer.
_____	T. _____	R. _____	Mer.
_____	T. _____	R. _____	Mer.

353267

Photographed
Indexed FB
Posted ✓
Assessor _____

The State of Wyoming }
County of Laramie } SS

This instrument was filed for record
at 159 o'clock P M. on the
24 day of March
A. D. 19 71 and duly recorded in
book _____ on page 344d.

James C. Whithead

County Clerk & Ex-Officio Register at Deeds
By Paul Bryan Deputy